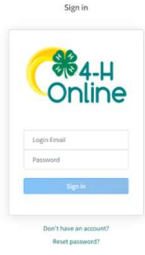


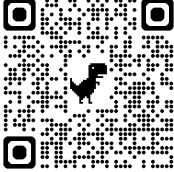
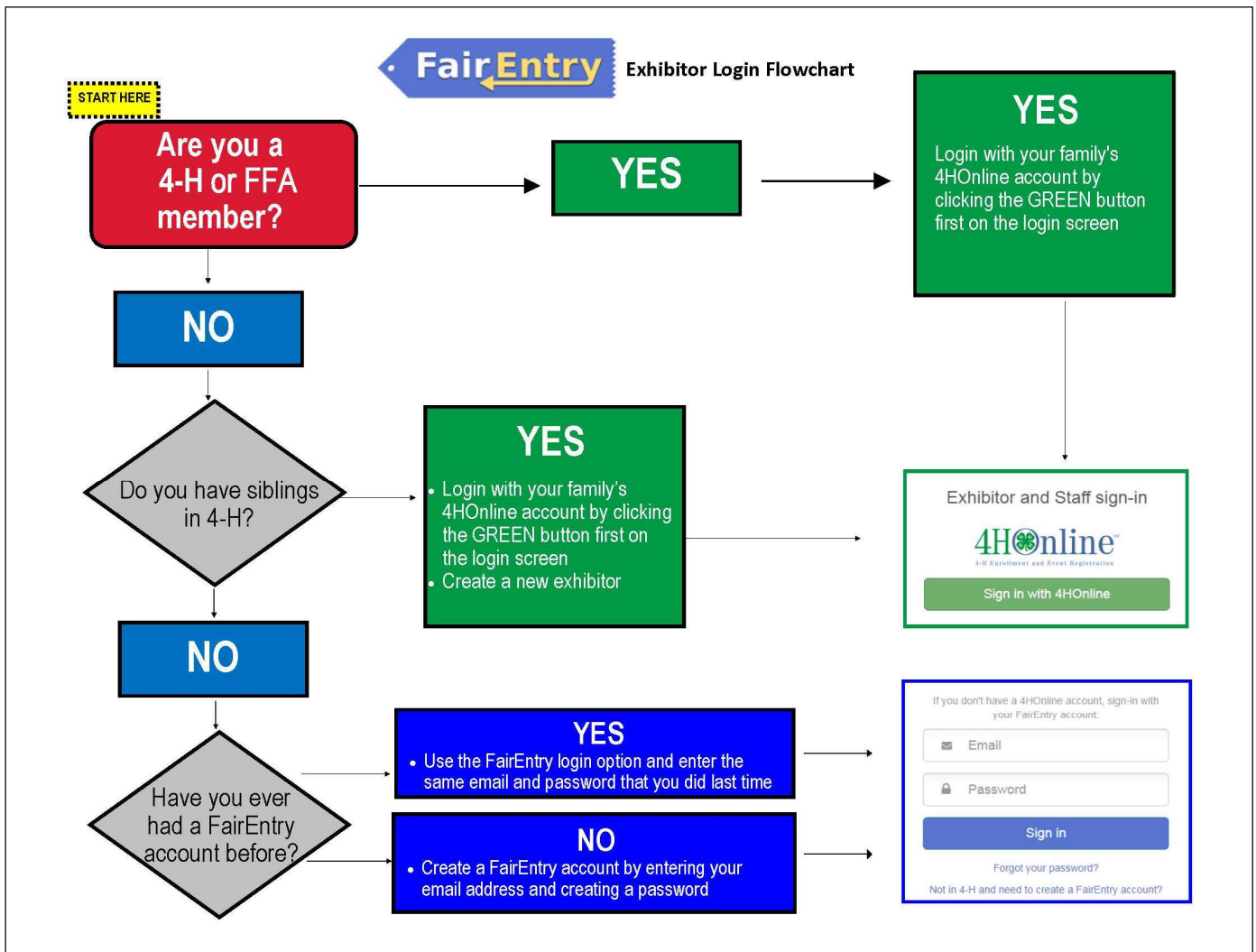


## Fair Guidelines for Jr. Fair Livestock Projects:

|  |  |  |
|--|--|--|
| <p>Membership Registration</p>  | <p>All club members must be registered in the online system with projects listed to compete in the County Fair.</p> <p>Due April 1<sup>st</sup>.</p>   |  <p><a href="https://v2.4honline.com/#/user/Sign-in">https://v2.4honline.com/#/user/Sign-in</a></p>     |
| <p>Fair Registration</p>        | <p>All Exhibitors must submit livestock entries to the fair office in person or online. There is a \$2 charge per exhibitor, one time per year. This is for Jr. Fair and Open Class Exhibitors.</p> <p>Due June 13, 2026</p> |  <p><a href="https://butlercountyohfair.fairentry.com">https://butlercountyohfair.fairentry.com</a></p> |



Here are some helpful resources for making entries in Fair Entry:  
 Log in with 4-H online: <https://vimeo.com/265821971>

Resources for Families: <https://fairentry.zendesk.com/hc/en-us/articles/217431057-Resources-for-Families-Making-Entries>